

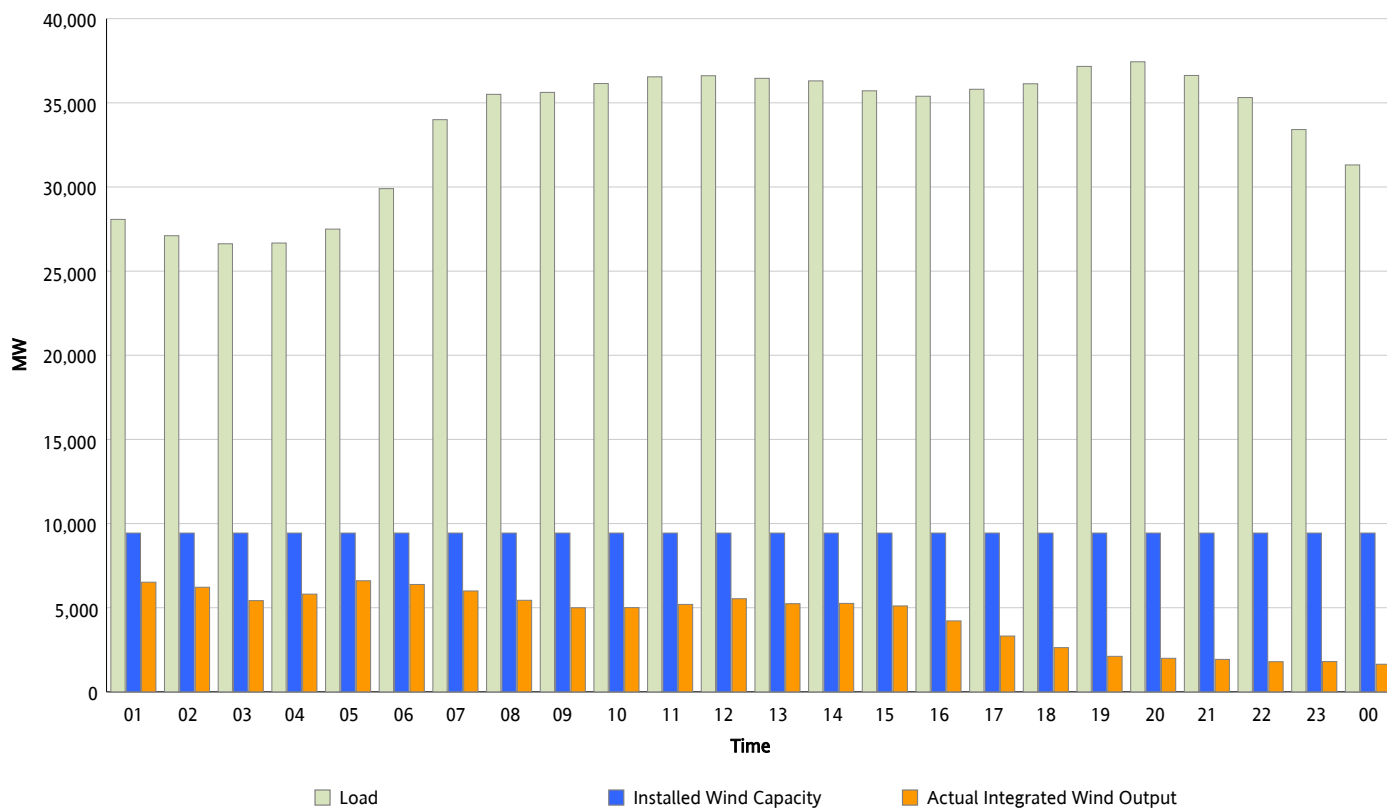


ERCOT Grid Operations

Wind Integration Report : 03/09/2012

Peak Load	37,439 MW
Load Peak Hour (HE)	20
Wind Over Peak	1,995 MW
Wind Record 03/07/12	7,599 MW
Max Wind Value*	6,899 MW
Wind Peak Time	04:04
Wind Integration %	25.5 %

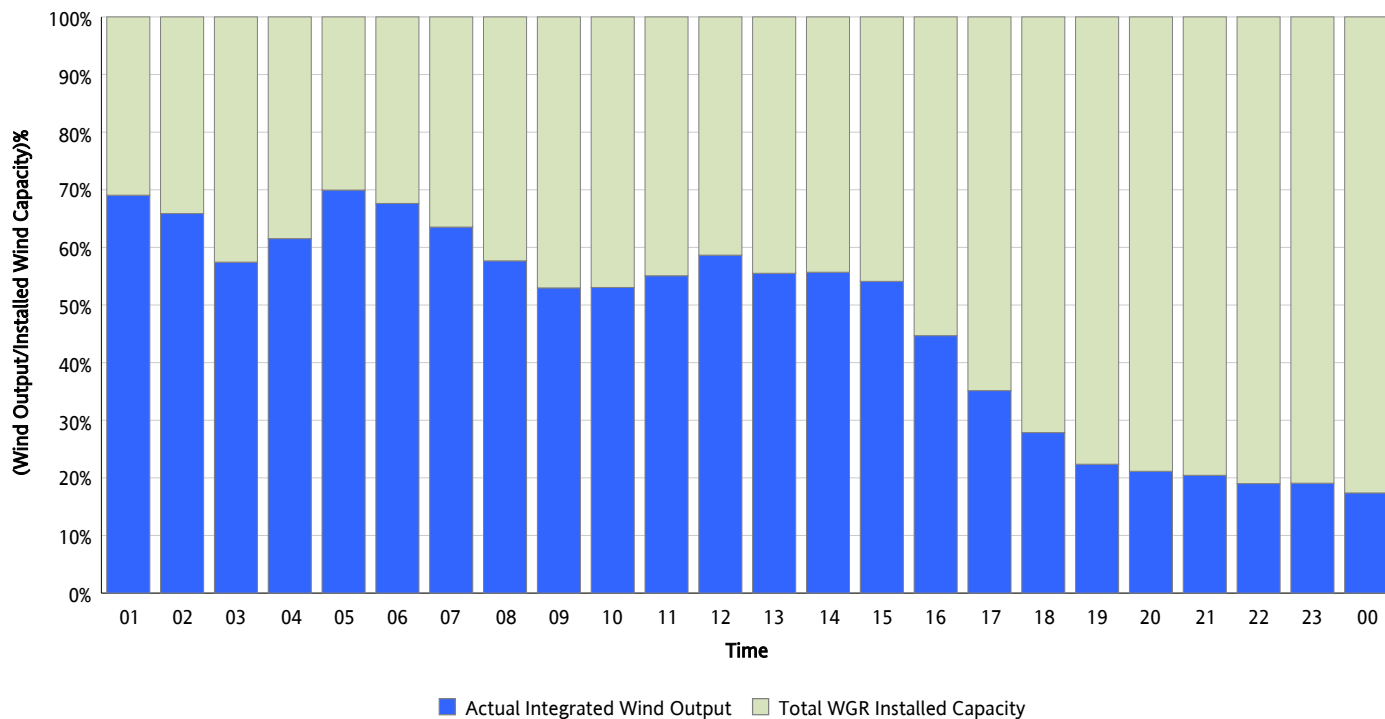
Hourly Average Actual Load vs. Actual Wind Output
03/09/2012



** Wind Record and Wind Max represent instantaneous values and the rest of the values are integrated over the hour*

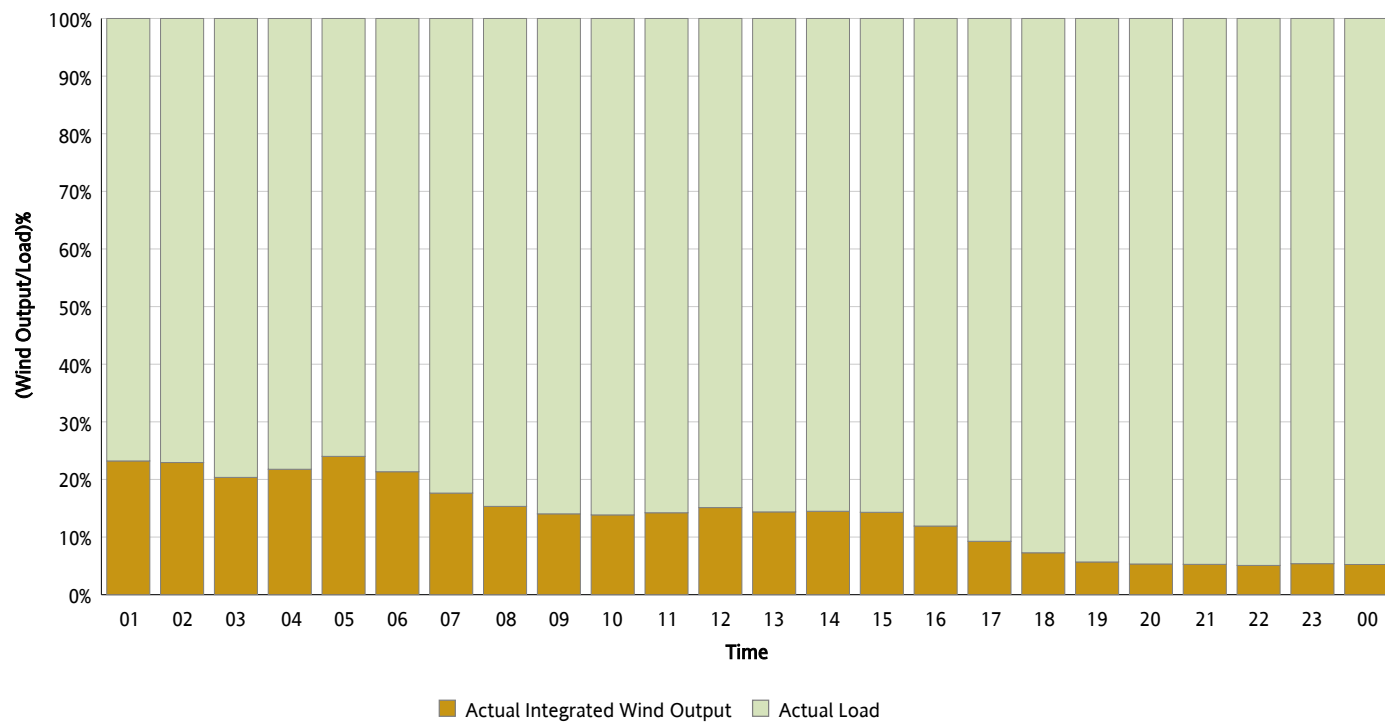
Actual Wind Output as a Percentage of the Total Installed Wind Capacity

03/09/2012



Actual Wind Output as a Percentage of the ERCOT Load

03/09/2012



ERCOT Load vs. Actual Wind Output

03/02/2012 - 03/09/2012

